

For the use of Medical Profession only

## SKM DASAMOOOLA KATUTHRAYAM TABLETS



- ▶ For healthy respiration
- ▶ Controls Bronchial asthma
- ▶ Effective in dry cough
- ▶ Effective in COPD

### Ingredients:

Each Tablet processed out of

Aegle marmelos	7.14%	Solanum indicum	7.14%
Oroxylum indicum	7.14%	Solanum zeylanicum	7.14%
Gmelina arborea	7.14%	Tribulus terresteris	7.14%
Stereospermum suaveolens	7.14%	Zingiber officinale	7.14%
Clerodendrum phlomoides	7.14%	Piper nigrum	7.14%
Desmodium gangeticum	7.14%	Piper longum	7.14%
Uraria picta	7.14%	Adhatoda vasica	7.14%

### Directions for usage

2 - 3 Tablets, twice or thrice daily (or)  
As directed by the physician.

### Indications

Useful in respiratory conditions like dry cough, Bronchial asthma, chest pain, pain in sacral region, Vata disorders.

Presentation 10 X 10 Blister packs



 **SKM SIDDHA AND AYURVEDA**  
NATURE'S WEALTH. OUR VALUES  
AN ISO 9001:2008 & GMP CERTIFIED COMPANY

*The act of breathing is Living !*



**SKM DASAMOOOLA KATUTHRAYAM  
TABLETS**

*Makes breath easy*

 **SKM SIDDHA AND AYURVEDA**  
NATURE'S WEALTH. OUR VALUES  
AN ISO 9001:2008 & GMP CERTIFIED COMPANY

Saminathapuram (po), Modakurichi - 638 104, Erode, Tamilnadu, India  
Tel: +91 - 424 - 2500590 Telefax : +91 - 424 - 2501238  
www.skmsiddha.org

For the use of Medical Profession only

## SKM GULGULU THIKTHAKAM TABLETS



- ▶ Useful in treatment of inflammation
- ▶ Induced wound healing
- ▶ Controls complications of diabetics
- ▶ Highly beneficial in skin disease
- ▶ Controls triglycerides

### Ingredients:

Each Tablet processed out of

Azadirachta indica	16.39%	Saussurea lappa	0.41%
Tinospora cordifolia	16.39%	Zanthoxylum alatum	0.41%
Adhatoda vasica	16.39%	Piper nigrum	0.41%
Tricosanthes dioica	16.39%	Hollorrhena antidysenterica	0.41%
Solanum xanthocarpum	16.39%	Coriandrum sativum	0.41%
Cissampelos pareira	0.41%	Plumbago zeylanica	0.41%
Embelia ribes	0.41%	Picorrhiza kurroa	0.41%
Cedrus deodara	0.41%	Semicarpus anacordium	0.41%
Scindapsus officinalis	0.41%	Acorus calamus	0.41%
Barleria priortitis	0.41%	Piper longum	0.41%
Hordium vulgare	0.41%	Rubia cordifolia	0.41%
Zingiber officinale	0.41%	Aconitum heterophyllum	0.41%
Curcuma longa	0.41%	Aconitum nepellus	0.41%
Anethum graveolens	0.41%	Trachyspermum ammi	0.41%
Piper chaba	0.41%	Commiphora mukul	8.20%



### Directions for usage

2 - 3 Tablets, twice or thrice daily (or) As directed by the physician.

### Indications

Useful in the treatment of inflammation, vata roga, weakness, fever, and wound healing. Also highly beneficial in skin diseases.

**Presentation** 10 X 10 Blister packs

 **SKM SIDDHA AND AYURVEDA**  
NATURE'S WEALTH. OUR VALUES  
AN ISO 9001:2008 & GMP CERTIFIED COMPANY  
Saminathapuram (po), Modakurichi - 638 104, Erode, Tamilnadu, India  
Tel: +91 - 424 - 2500590 Telefax : +91 - 424 - 2501238  
www.skmsiddha.org

 **SKM SIDDHA AND AYURVEDA**  
NATURE'S WEALTH. OUR VALUES  
AN ISO 9001:2008 & GMP CERTIFIED COMPANY

## Stressed of triglycerides ?



## SKM GULGULU THIKTHAKAM TABLETS

Relieves stress

For the use of Medical Profession only

## SKM MAHARASNADI TABLETS



- ▶ Excellent nerve tonic
- ▶ Relieves rheumatic ailments
- ▶ Useful in vata disorders
- ▶ Relieves gastro intestinal disturbances
- ▶ Controls complications of obesity
- ▶ Effective in Kyphosis, Hemiplegia, Sciatica, Brachialgia, Flatulence, Facial palsy

### Ingredients:

Each Tablet processed out of

Alpinia galanga	67%	Boerhavia diffusa	1.32%
Fagonia cretica	1.32%	Tinospora cordifolia	1.32%
Sida cordifolia	1.32%	Ipomoea petaloidea	1.32%
Ricinus communis	1.32%	Anethum graveolens	1.32%
Cedrus deodara	1.32%	Tribulus terrestris	1.32%
Hedychium spicatum	1.32%	withania somnifora	1.32%
Acorus calamus	1.32%	Aconitum ferox	1.32%
Adhatoda vasica	1.32%	Cassia fistula	1.32%
Zingiber officinale	1.32%	Barleria prionitis	1.32%
Terminalia chebula	1.32%	Coriandrum sativum	1.32%
Piper chaba	1.32%	Solanum zeylanicum	1.32%
Cyperus rotundus	1.32%	Solanum indicum	1.32%

### Directions for usage

2 - 3 Tablets, twice or thrice daily (or) As directed by the physician.

### Indications

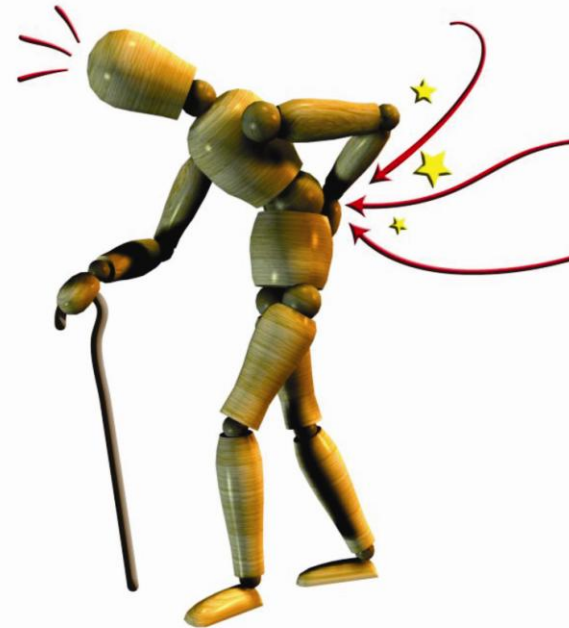
Useful in vata disorders such as Kyphosis, Hemiplegia, Sciatica, Rheumatism, Brachialgia, Flatulence, Facial palsy, Obesity, etc., Very good nerve tonic.

**Presentation** 10 X 10 Blister packs



 **SKM SIDDHA AND AYURVEDA**  
NATURE'S WEALTH. OUR VALUES  
AN ISO 9001:2008 & GMP CERTIFIED COMPANY

*We are not born to suffer !*



**SKM MAHARASNADI TABLETS**

*paves way to happiness*

 **SKM SIDDHA AND AYURVEDA**  
NATURE'S WEALTH. OUR VALUES  
AN ISO 9001:2008 & GMP CERTIFIED COMPANY  
Saminathapuram (po), Modakurichi - 638 104, Erode, Tamilnadu, India  
Tel: +91 - 424 - 2500590 Telefax : +91 - 424 - 2501238  
www.skmsiddha.org

For the use of Medical Profession only

## SKM NIMBADI TABLETS



- ▶ For healthy skin
- ▶ Controls pimples
- ▶ Effective in gangrene
- ▶ Excellent skin care

### Ingredients:

Each Tablet processed out of

Azadirachta indica	10%
Zingiber officinale	10%
Tinospora cordifolia	10%
Cedrus deodara	10%
Hedychium spicatum	10%
Swertia chirata	10%
Innula racemosa	10%
Piper longum	10%
Scindapsus officinalis	10%
Solanum indicum	10%

### Directions for usage

2 - 3 Tablets, twice or thrice daily (or)  
As directed by the physician.

### Indications

Useful in treating Gangrene, Boil, Pimples and Fever, etc.,

Presentation 10 X 10 Blister packs



 **SKM SIDDHA AND AYURVEDA**  
NATURE'S WEALTH. OUR VALUES  
AN ISO 9001:2008 & GMP CERTIFIED COMPANY

*Beauty is not only skin deep !*



## SKM NIMBADI TABLETS

*for healthy skin*

 **SKM SIDDHA AND AYURVEDA**  
NATURE'S WEALTH. OUR VALUES  
AN ISO 9001:2008 & GMP CERTIFIED COMPANY  
Saminathapuram (po), Modakurichi - 638 104. Erode. Tamilnadu. India  
Tel: +91 - 424 - 2500590 Telefax : +91 - 424 - 2501238  
[www.skmsiddha.org](http://www.skmsiddha.org)



For the use of Medical Profession only

## SKM PUNARNAVADI TABLETS



- ▶ Excellent diuretic
- ▶ Renal care
- ▶ Effective in treatment of oedema
- ▶ Highly beneficial in Jaundice

### Ingredients:

Each Tablet processed out of

Boerhavia diffusa	10%
Berberis aristata	10%
Curcuma longa	10%
Swertia chirata	10%
Trichosanthes dioica	10%
Terminalia chebula	10%
Azadirachta indica	10%
Cyperus rotundus	10%
Zingiber officinale	10%
Tinospora cordifolia	10%

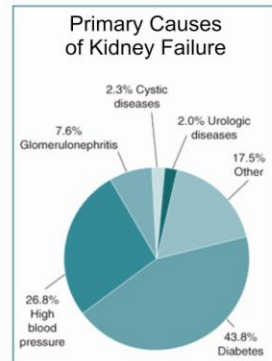
### Directions for usage

2 - 3 Tablets, twice or thrice daily (or) As directed by the physician.

### Indications

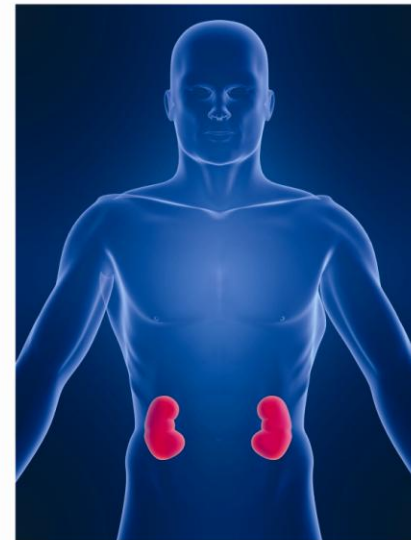
Useful in generalized and localized oedema, Pandu, Kamala etc, Excellent diuretic.

**Presentation** 10 X 10 Blister packs



 **SKM SIDDHA AND AYURVEDA**  
NATURE'S WEALTH. OUR VALUES  
AN ISO 9001:2008 & GMP CERTIFIED COMPANY

*An ounce of prevention is worth a pound of cure !*



## SKM PUNARNAVADI TABLETS

*for renal care*

 **SKM SIDDHA AND AYURVEDA**  
NATURE'S WEALTH. OUR VALUES  
AN ISO 9001:2008 & GMP CERTIFIED COMPANY  
Saminathapuram (po), Modakurichi - 638 104, Erode, Tamilnadu, India  
Tel: +91 - 424 - 2500590 Telefax : +91 - 424 - 2501238  
www.skmsiddha.org